

Wall mounted receptacle DUO

Part no. 7629

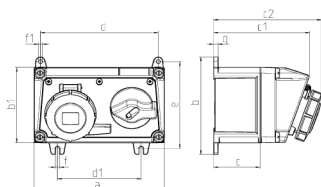


- screw terminals
- for horizontal installation
- switched
- mechanical DUO-interlock
- receptacles can be padlocked
- Conductor cross-section min.: 1,5 mm²
- Conductor cross-section max.: 10 mm²

Technical specifications

| | |
|-----------------------|-----------------|
| Ampere | 32 A |
| Poles | 3 p |
| Voltage | 230 V |
| Clock position | 6 h |
| Hertz | 50-60 Hz |
| Connection technology | Screw terminals |
| Contact | standard |
| Protection type | IP67 |
| Enclosure material | Plastic |
| Weight | 1556 g |
| Certifications | EAC |

Drawing



| Drawing 1 MB 551 Dim. in mm | Amp. Poles | 16 | | | 32 | | |
|-----------------------------------|---------------|-----|-----|-----|-----|-----|-----|
| | | 3 | 4 | 5 | 3 | 4 | 5 |
| a | | 225 | 225 | 225 | 225 | 225 | 225 |
| b | | 168 | 168 | 168 | 168 | 168 | 168 |
| b1 | | 130 | 130 | 130 | 130 | 130 | 130 |
| c | | 80 | 80 | 80 | 80 | 80 | 80 |
| c1 | | 166 | 166 | 166 | 166 | 166 | 166 |
| c2 | | 182 | 185 | 186 | 197 | 197 | 198 |
| d | | 204 | 204 | 204 | 204 | 204 | 204 |
| d1 | | 145 | 145 | 145 | 145 | 145 | 145 |
| e | | 150 | 150 | 150 | 150 | 150 | 150 |
| f | | 7 | 7 | 7 | 7 | 7 | 7 |
| f1 | | Ø7 | Ø7 | Ø7 | Ø7 | Ø7 | Ø7 |
| g | | 8 | 8 | 8 | 8 | 8 | 8 |