

Cepex panel mounted receptacle SCHUKO®

Part no. 4980

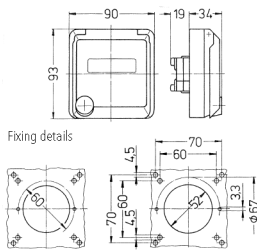


- alpine white or pearl white
- screw terminals
- with labelling field
- suitable for installation in cable ducts and columns

Technical specifications

| | |
|-----------------|----------|
| Ampere | 16 A |
| Poles | 2 p+PE |
| Voltage | 230 V |
| Hertz | 50-60 Hz |
| Protection type | IP44 |
| Shutter | false |
| Weight | 139 g |

Drawing



Drawing
1 MB 325
Dim. in mm