

## Wall mounted receptacle

Part no. 736

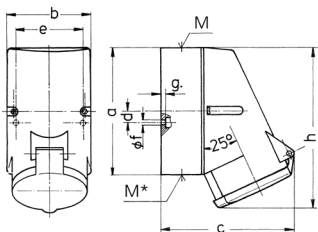


- screw terminals
- with highly heat resistant contact carrier
- nickel plated contacts
- internal fixing
- one cable entry at the top, two blind entries (can be cut out) at the bottom
- enclosure base can be turned 180°
- receptacles are designed for adding an auxiliary contact switch

## Technical specifications

Ampere	32 A
Poles	7 p
Voltage	400 V
Clock position	6 h
Hertz	60-50 Hz
Connection technology	Screw terminals
Contact	nickel plated contacts, highly heat resistant contact carrier
Protection type	IP44
Weight	451 g

## Drawing



Drawing	Amp.	16	32
1 MB 257	Poles	7	7
Dim. in mm	a	128	128
	b	84	84
	c	124	138
	d	11	11
	e	68	68
	f	5.3	5.3
	g	4	4
	h	145	160
	M	25	32
	M*	2x25 (blind) to be cut out	2x25 (blind) to be cut out
	Max. cable diam. (mm)	18	25
Terminal for cond. cross section (mm <sup>2</sup> ) min.-max.	1.5	2.5	
	—4	—10	