

## Wall mounted receptacle

Part no. 577

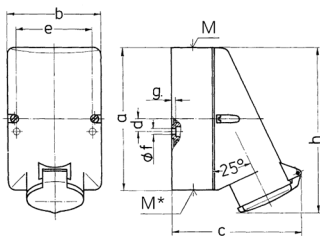


- screw terminals
- internal fixing
- one cable entry at top and two blind entries (can be cut out) at bottom
- lower part of enclosure base can be turned 180°

## Technical specifications

|                       |                 |
|-----------------------|-----------------|
| Ampere                | 16 A            |
| Poles                 | 2 p             |
| Voltage               | 20-25 V         |
| Hertz                 | 50-60 Hz        |
| Connection technology | Screw terminals |
| Contact               | standard        |
| Protection type       | IP44            |
| Weight                | 260 g           |

## Drawing



| Drawing<br>1 MB 137 | Amp.<br>Poles   | 16                         |     | 32                         |     |
|---------------------|---|----------------------------|-----|----------------------------|-----|
|                     |   | 2                          | 3   | 2                          | 3   |
| Dim. in mm          | a   | 128                        | 128 | 128                        | 128 |
|                     | b   | 84                         | 84  | 84                         | 84  |
|                     | c   | 120                        | 120 | 120                        | 120 |
|                     | d   | 11                         | 11  | 11                         | 11  |
|                     | e   | 68                         | 68  | 68                         | 68  |
|                     | f   | 5.3                        | 5.3 | 5.3                        | 5.3 |
|                     | g   | 4                          | 4   | 4                          | 4   |
|                     | h   | 146                        | 146 | 146                        | 146 |
|                     | M   | 25                         | 25  | 32                         | 32  |
|                     | M*  | 2x25 (blind) to be cut out |     | 2x25 (blind) to be cut out |     |
|                     | Max. cable diam. (mm)   | 18                         | 18  | 25                         | 25  |
|                     | Terminal for cond. cross section (mm <sup>2</sup> ) min.-max. | 4                          | 4   | 4                          | 4   |
|                     |   | -2x6                       | -10 | -2x6                       | -10 |