

Wall mounted phase inverter inlet

Part no. 2478

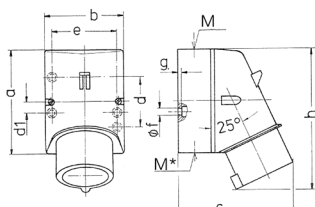


- screw terminals

Technical specifications

| | |
|-----------------------|-----------------|
| Ampere | 32 A |
| Poles | 5 p |
| Voltage | 400 V |
| Clock position | 6 h |
| Hertz | 50-60 Hz |
| Connection technology | Screw terminals |
| Contact | standard |
| Protection type | IP44 |
| Weight | 393 g |
| Certifications | VDE, CQC |

Drawing



| Drawing 2 MB 32 | Amp. Poles | 16 | | | 32 | | |
|---|---------------|----------------------------|------|------|----------------------------|-------|-------|
| | | 3 | 4 | 5 | 3 | 4 | 5 |
| Dim. in mm | a | 87 | 100 | 100 | 128 | 128 | 128 |
| | b | 64 | 75 | 75 | 84 | 84 | 84 |
| | c | 93 | 106 | 110 | 133 | 133 | 135 |
| | d | 40 | — | — | — | — | — |
| | d1 | — | 10.5 | 10.5 | 11 | 11 | 11 |
| | e | 50.5 | 59 | 59 | 68 | 68 | 68 |
| | f | 4.5 | 5 | 5 | 5.3 | 5.3 | 5.3 |
| | g | 4 | 4 | 4 | 4 | 4 | 4 |
| | h | 122 | 133 | 135 | 169 | 169 | 170 |
| | M | 20 | 20 | 20 | 32 | 32 | 32 |
| | M* | 1x20 (blind) to be cut out | | | 2x25 (blind) to be cut out | | |
| Max. cable diam. (mm) | | 15 | 15 | 15 | 18/25 | 18/25 | 18/25 |
| Terminal for cond. cross section (mm ²) min.-max. | | 1 | 1 | 1 | 2.5 | 2.5 | 2.5 |
| | | -2.5 | -2.5 | -2.5 | -6 | -6 | -6 |