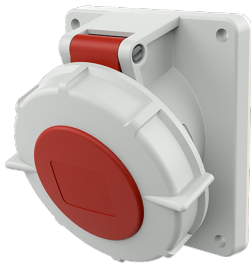


Panel mounted receptacle

Part no. 2459

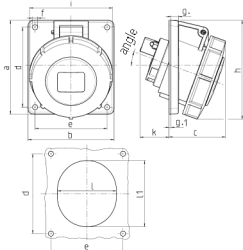


- screw terminals
- highly heat resistant contact carrier
- nickel plated contacts
- 20° inclination

Technical specifications

| | |
|-----------------------|---|
| Ampere | 16 A |
| Poles | 7 p |
| Voltage | 400 V |
| Clock position | 6 h |
| Hertz | 50-60 Hz |
| Connection technology | Screw terminals |
| Contact | nickel plated contacts, highly heat resistant contact carrier |
| Protection type | IP67 |
| Flange | 100x92 mm |
| Fixing hole | 85x77 mm |
| Inclination | 20 ° |
| Weight | 256 g |

Drawing



| Drawing 1 MB 251 | Amp. Poles | 16 | | 32 | |
|---|---------------|-----|--|-----|--|
| | | 7 | | 7 | |
| Dim. in mm | a | 100 | | 100 | |
| | b | 92 | | 92 | |
| | c | 62 | | 66 | |
| | d | 85 | | 85 | |
| | e | 77 | | 77 | |
| | f | 5,5 | | 5,5 | |
| | g | 8 | | 8 | |
| | g.1 | 2 | | 2 | |
| | h | 105 | | 113 | |
| | i | 96 | | 110 | |
| | k | 39 | | 54 | |
| | l | 65 | | 72 | |
| | ll | 72 | | 85 | |
| | o | 20° | | 20° | |
| Terminal for cond. cross section (mm²) min.-max. | | 1,5 | | 2,5 | |
| | | -4 | | -10 | |