

Panel mounted receptacle

Part no. 1045

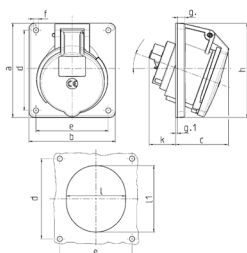


- screw terminals
- highly heat resistant contact carrier
- nickel plated contacts
- 20° inclination

Technical specifications

Ampere	16 A
Poles	7 p
Voltage	500 V
Clock position	7 h
Hertz	50-60 Hz
Connection technology	Screw terminals
Contact	highly heat resistant contact carrier, nickel plated contacts
Protection type	IP44
Flange	100x92 mm
Fixing hole	85x77 mm
Inclination	20 °
Weight	216 g

Drawing



Drawing	Amp.	16	32
1 MB 260	Poles	7	7
Dim. in mm	a	100	100
	b	92	92
	c	58	61
	d	85	85
	e	77	77
	f	5.5	5.5
	g	8	8
	g.1	2	2
	h	100	106
	k	40	55
	l	65	72
	l1	72	85
	α	20°	20°
Terminal for cond. cross section (mm ²) min.-max.		1.5 —4	2.5 —10