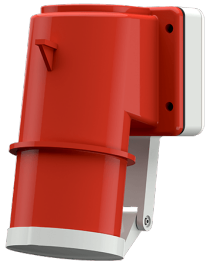


Panel mounted inlet

Part no. 412

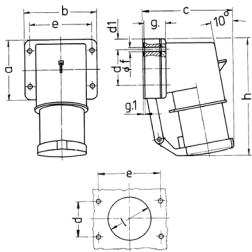


- screw terminals
- with hinged lid

Technical specifications

Ampere	32 A
Poles	5 p
Voltage	400 V
Clock position	6 h
Hertz	50-60 Hz
Connection technology	Screw terminals
Contact	standard
Protection type	IP44
Weight	365 g
Certifications	VDE, CQC

Drawing



Drawing	Amp.	16		32				
		Poles		4	5	3	4	5
2 MB 43								
Dim. in mm								
a		85	85	75	75	75		
b		85	85	90	90	90		
c		104	106	115	115	117		
d		64	64	45	45	45		
d1		10	10	13	13	13		
e		64	64	78	78	78		
f		5.5	5.5	5.5	5.5	5.5		
g		27	27	27	27	27		
g.1		2	2	1	1	1		
h		140	140	150	150	150		
l		50	50	55	55	55		
Terminal for cond. cross section (mm ²) min.-max.		1	1	2.5	2.5	2.5		
		-2.5	-2.5	-6	-6	-6		