

Safety Information

Electrical equipment should be installed, operated, serviced, and maintained only by qualified personnel. No responsibility is assumed by Schneider Electric for any consequences arising out of the use of this material.

A qualified person is one who has skills and knowledge related to the construction, installation, and operation of electrical equipment and has received safety training to recognize and avoid the hazards involved.



Esmi Impresia Red IP65 Deep Base

Esmi Impresia Red IP65 Deep Base (FFS06741013) is a waterproof protected deep base specially designed for installing in addressable fire alarm systems with Esmi ELC loop controller supporting Schneider Electric communication protocol. The deep base is suitable for wall mounting in applications in aggressive environments requiring IP65 protection of the devices. Esmi Impresia Red IP65 Deep Base comes in a kit with a solid rubber gasket, o-ring sealant and IP65 rated cable glands. Esmi Impresia Standard Base (FFS06741018) is mounted with screws. EN 60529 for indoor and outdoor use.

For more technical information visit www.se.com.

Installation Instructions

1. Follow the applicable local and national installation codes and regulations. Remove the Esmi Impresia Standard Base from the deep base body.
2. Remove the knockouts and place the two cable glands from the kit.
3. Fix the deep base and the solid gasket to the mounting surface.
4. Run the loop wires through the cable glands.
5. Mount the Esmi Impresia Standard Base back in place as observe the short mark on its narrow side to align with the short mark of the deep base.
6. Then fix the Esmi Impresia Standard Base to the deep base body with the screws from the kit.
7. Connect the loop wires to the standard base terminals according the connection diagram. Please also refer to the installation manual of the Esmi Impresia Red VAD Wall Mounted Sounder (FFS06741012) or Esmi Impresia White VAD Wall Mounted Sounder (FFS06741015).
8. To perform the correct wiring - the electrical connection may differ according that the sounder is with or without a built-in isolator module.

Electrical equipment should be installed, operated, serviced, and maintained only by qualified personnel. No responsibility is assumed by Schneider Electric for any consequences arising out of the use of this material.

Technical Specifications

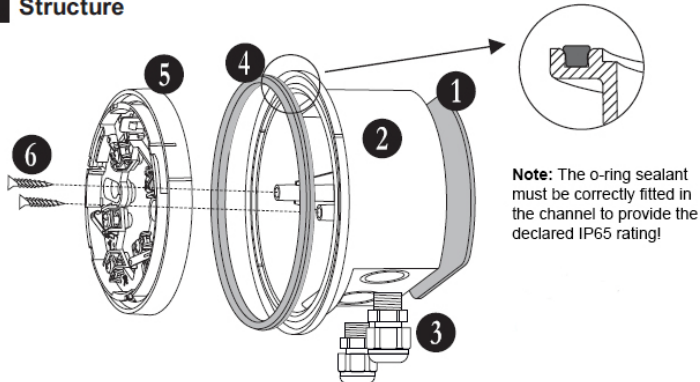
Installation wires. 3mm²
 Material (plastic), color ABS, red
 Operation temperature -10°C ÷ +60°C
 Relative humidity ≤93% @ +40°C
 Weight 140.5g



Made in Bulgaria
 EN 60529+A1:2004

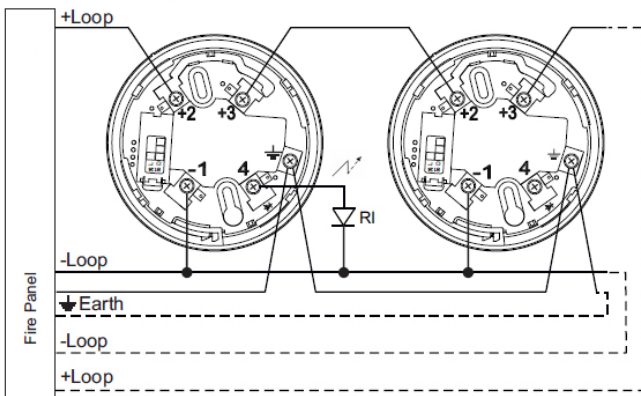
Schneider Electric Buildings AB
 Mobilvägen 8
 22362 Lund
 Sweden

1 Structure



- (1) - Solid rubber gasket
- (2) - Deep base body
- (3) - Cable glands IP65 (2 pcs.)
- (4) - O-ring rubber sealant
- (5) - Esmi Impresia Standard Base
- (6) - Screws for fixing the standard base to the deep base (2 pcs.)

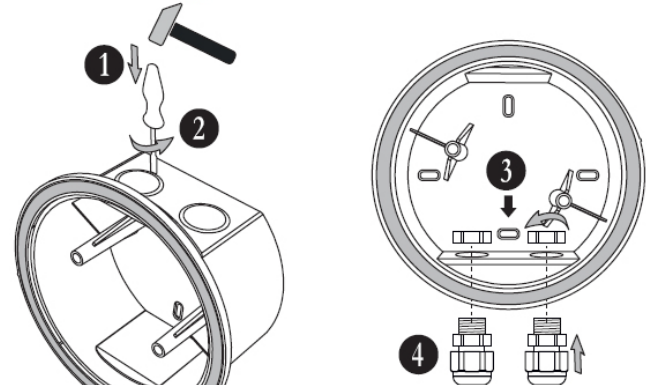
3 Connection Diagram



Note: Disconnect the loop power before installing device!

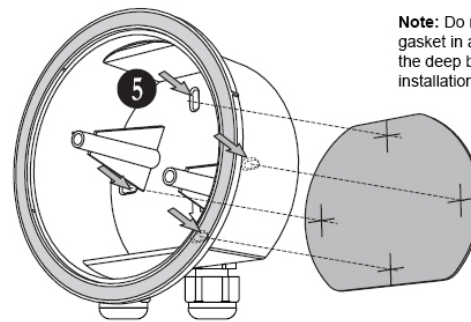
RI - Remote Indicator
 +Loop - Positive loop wire
 -Loop - Negative loop wire
 Earth - Earth point

2 Surface Mounting



Remove the knockouts of the cable gland holes.

Place the back box in upright position; Mount cable glands with IP65 into the holes and tighten the nuts underneath.



Note: Do not drill holes in the solid rubber gasket in advance! Place the gasket behind the deep base and fix them together to the installation surface.

Mount the deep base to the wall placing the solid rubber gasket behind.