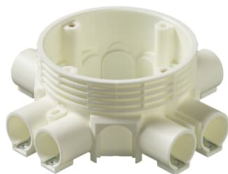




PRODUCT-DETAILS

# AU8

## AU8 Junction box White



General Information	
Extended Product Type	AU8
Product ID	2TKA130033G1
EAN	6410011521083
Catalog Description	AU8 Junction box White
Long Description	The AU8 junction box is 53 mm high and has eight inlets for Ø 20 conduits. The box also has knock-outs for 4 side inlets and 4 bottom inlets. In wall installation the box can be attached with a AS13 support. Made of halogen free material (IEC/61249-2-21) and fulfills the requirements of the glow wire test according to the standard IEC/EN60670: 2005 (850 °C).

Eco Transparency	
Environmental Product Declaration - EPD	9AKK108468A0930

Technical	
Application	None
Model Number	Single

Number of Poles	0
Number of Conduit Inlets	8
Number of Gangs	1
Number of Inlet Inserts Included	8
Design	Cable junction box
Cover Mounting Type	Snap On
Mounting Type	Flush mounted (plaster)
Switching Equipment Mounting Type	Screw
Shape	Round
Surface Finishing	Untreated
Material	Plastic, Thermoplastic
Includes	None
Color	White

Material Compliance

RoHS Information	9AKK106713A4634
RoHS Status	Following EU Directive 2011/65/EU and Amendment 2015/863 July 22, 2019
RoHS Date	20240314
REACH Declaration	9AKK106713A4633
REACH Information	True - contains substances > 0.1 mass percentage
REACH Date	20240314
Conflict Minerals Reporting Template (CMRT)	9AKK108468A3363
SCIP	b39897f2-48d5-41c2-aadd-2f88c220c882 Finland (FI)

Dimensions

Product Net Width	0.135 m
Product Net Height	0.053 m
Product Net Depth / Length	135 mm
Product Net Weight	0.088 kg

Ordering

Package Level 1 Units	box 100 piece
Package Level 1 Gross Weight	9 kg
E-Number (Finland)	1152108
E-Number (Sweden)	1422001

Certificates and Declarations

Declaration of Conformity - CE	9AKK108467A7115
--------------------------------	-----------------

Installation

Instructions and Manuals	9AKK10103A2549
--------------------------	----------------

Popular Downloads	
Data Sheet, Technical Information	9AKK10103A2549
Classifications	
ETIM 8	EC002601 - Box/housing for built-in mounting in the wall/ceiling
ETIM 9	EC002601 - Box/housing for built-in mounting in the wall/ceiling
WEEE Category	Product Not in WEEE Scope

Categories
Low Voltage Products and Systems → Installation Materials → Flush Mounted Boxes → Plastic Junction Boxes → Concrete

