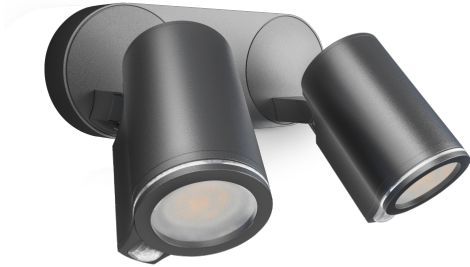


Sensor-switched LED floodlight

Spot DUO S

with motion detector
EAN 4007841 058647
Article number 058647



LED

20.000 h

3000 K

3000K warm-white



38°



2x Infrared sensor
90°



max. 10 m



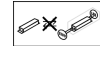
IP44



2 - 1000 lux



Light source
replaceable by end
user



Control gear not
exchangeable



8 sec - 35 min

Function description

Powerfully bright LED duo. Wall spot DUO Sensor with two swivelling spotlight heads (180° horizontally, 90° vertically), each with 90° infrared sensor (10 m reach). 2 x 520 lm from 2 x 7 W for optimum illumination all around the building. With time setting (8 s - 35 min) and twilight setting (2-1000 lux). Several spots can be interconnected by cable. Includes 2 GU-10 LED lamps.

Technical specifications

Dimensions (L x W x H)	175 x 247 x 98 mm	Mechanical scalability	No
With lamp	Yes, LED lamp	Reach, radial	r = 2 m (3 m ²)
With motion detector	Yes	Reach, tangential	r = 10 m (79 m ²)
Manufacturer's Warranty	3 years	Photo-cell controller	Yes
Settings via	Potentiometers	Luminous flux total product	1024 lm
Version	with motion detector	Measured luminous flux (360°)	1024 lm
PU1, EAN	4007841058647	Total product efficiency	68,5 lm/W
Application, place	Outdoors	Colour temperature	3000 K
Application, room	outdoors, all round the building, terrace / balcony, courtyard & driveway	Colour variation LED	SDCM5
Colour	Anthracite	Lamp	LED can be replaced
Includes corner wall mount	No	Service life LED L70B50 (25°)	> 20000 h
Installation site	wall	Soft light start	No
Installation	Wall, Surface wiring	Continuous light	selectable
Impact resistance	IK03	Twilight setting	2 – 1000 lx
IP-rating	IP44	Time setting	8 s – 35 Min.
Protection class	I	Basic light level function	No
		Main light adjustable	No

<https://www.steinel.de>

Subject to technical modifications

09.2023 Page 1 from 4

Sensor-switched LED floodlight

Spot DUO S

with motion detector
EAN 4007841 058647
Article number 058647



Technical specifications

Ambient temperature	-20 – 40 °C
Housing material	Aluminium
Cover material	Plastic, transparent
Mains power supply	220 – 240 V / 50 – 60 Hz
Mounting height max.	2,50 m
Sneak-by guard	No
Capability of masking out individual segments	No
Electronic scalability	No

Twilight setting TEACH	No
Interconnection	Yes
Interconnection via	Cable
Output	14,95 W
Colour Rendering Index CRI	= 81
Optimum mounting height	2 m
Detection angle	90 °

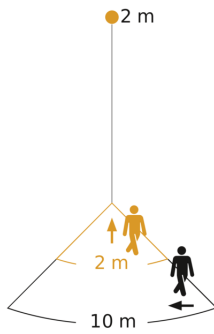
Sensor-switched LED floodlight

Spot DUO S

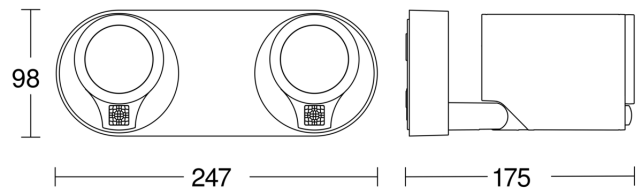
with motion detector
EAN 4007841 058647
Article number 058647



Detection Zone

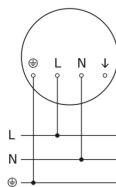


Dimension Drawing

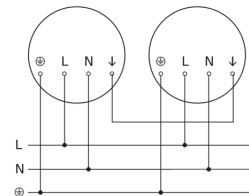


Possible mounting height: 1,80 m - 2,50 m
Orange: radial
Black: tangential

Circuit diagram



Master/master interconnection circuit diagram



Sensor-switched LED floodlight

Spot DUO S

with motion detector
EAN 4007841 058647
Article number 058647



Master/slave interconnection circuit diagram

