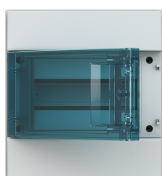


PRODUCT-DETAILS

# 65P08X12

## 65P08X12 Consumer Unit (empty)



### General Information

Extended Product Type	65P08X12
Product ID	1SL1201A00
ABB Type Designation	Mistral65
EAN	8000126097924
Catalog Description	65P08X12 Consumer Unit (empty)
Long Description	MISTRAL65 transparent door 8 DIN modules GWT 650°C

### Technical

Power Loss	20 W
Number of Line Terminals	0
Number of Rows	1
Cover Plate Type	Door
Mounting Type	Surface mounted (plaster)
Door Type	Single
Enclosure Material	thermoplastic
Housing Material	Plastic
Transparent Door	Yes
Cover Style	with Notch
DIN Place Units	8
RAL Number	RAL 7035 - Light Grey

Color grey

## Environmental

Degree of Protection	IP65
Protection Class	Isolated (Class II)
RoHS Status	Following EU Directive 2011/65/EU and Amendment 2015/863 July 22, 2019
RoHS Information	9AKK108468A2427
REACH Declaration	9AKK108467A3199
Environmental Information	1SLC801013D0201
Conflict Minerals Reporting Template (CMRT)	9AKK108468A3363

## Dimensions

Width in Number of Modular Spacings	8
Product Net Width	232.000 mm
Product Net Height	155.000 mm
Product Net Depth / Length	250.000 mm
Product Net Weight	1.07 kg

## Ordering

Minimum Order Quantity	1 piece
Package Level 1 Units	box 11 piece
Package Level 1 Gross Weight	12.82 kg

## Certificates and Declarations

Declaration of Conformity - CE	9AKK108468A2427
--------------------------------	-----------------

## Installation

Instructions and Manuals	No document needed
--------------------------	--------------------

## Popular Downloads

Data Sheet, Technical Information	1SLC801013D0201
Building Information Modeling - BIM	9AKK107046A8397

## Classifications

ETIM 8	EC000214 - Small distribution board
ETIM 9	EC000214 - Small distribution board
WEEE Category	Product Not in WEEE Scope

---

## Categories

---

Low Voltage Products and Systems → Enclosures → Consumer Units → Consumer Units → MISTRAL65

