



# MASTER LEDtube Mains T5

## MASTER LEDtube 1200mm HE 16.5W 865 T5 EU

The new Philips Master LEDtube Mains T5 brings simplicity to your lighting project. You don't need to pay attention to the driver technology anymore. Thanks to a unique design, Philips MASTER LEDtube Mains T5 installs in luminaires operating on mains power connection. So simple to operate! . Perfectly safe, reliable & easy to install, the Philips MASTER LEDtube Mains T5 is the ideal alternative to standard fluorescent tubes to maximise value over lifetime with high energy savings and lower maintenance costs.

### Product data

<b>General information</b>		<b>Colour rendering index (CRI)</b> 80	
Cap base	G5 [G5]	<b>LLMF at end of nominal lifetime (nom.)</b> 70 %	
CE mark	Yes		
EU RoHS compliant	Yes	<b>Operating and electrical</b>	
Nominal lifetime	50,000 h	Line Frequency	50 to 60 Hz
Switching cycle	200,000	Input frequency	50 to 60 Hz
Lighting Technology	LED	Power Consumption	16.5 W
	Sphere	Lamp current (nom.)	85 mA
Brand	Philips	Starting time (nom.)	0.5 s
		Warm-up time to 60% light	0.5 s
<b>Light technical</b>		Power Factor (Fraction)	0.92
Colour Code	865 [CCT of 6500K]	Voltage (nom.)	220-240 V
Beam angle (nom.)	200 degree(s)		
Luminous Flux	2,500 lm	<b>Temperature</b>	
Colour designation	Cool Daylight	T-Case maximum (nom.)	70 °C
Correlated Colour Temperature	6500 K		
Luminous Efficacy (rated) (Nom)	151 lm/W	<b>Mechanical and housing</b>	
Colour consistency	<6	Lamp Finish	Frosted

MASTER LEDtube Mains T5

Bulb material	Glass
Product length	1,200 mm
Bulb shape	Tube, double-ended

Approval and application

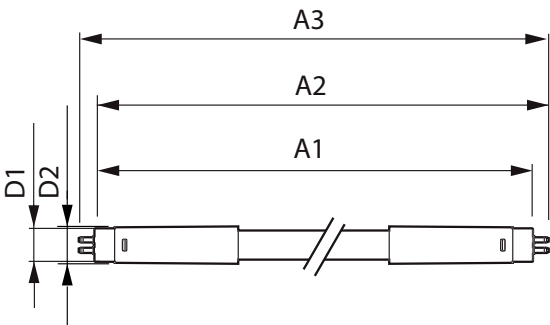
Energy-saving product	Yes
Approval marks	RoHS compliance CE marking KEMA Keur certificate
Energy consumption kWh/1,000 hours	17 kWh 467,299

Product data

Full EOC	871951433435900
----------	-----------------

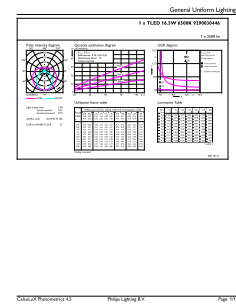
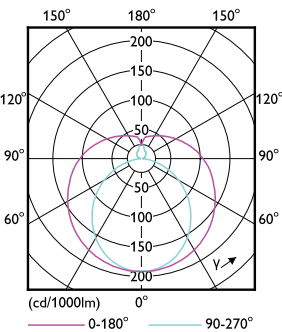
Order product name	MAS LEDtube 1200mm HE 16.5W 865 T5 EU
Order code	33435900
SAP numerator – quantity per pack	1
Numerator – packs per outer box	10
Material number (12NC)	929003044602
Net weight	0.215 kg
Full product name	MASTER LEDtube 1200mm HE 16.5W 865 T5 EU
EAN/UPC – Case	8719514334366

Dimensional drawing



Product	D1	D2	A1	A2	A3
MAS LEDtube 1200mm HE 16.5W 865 T5 EU	15.8 mm	19 mm	1,149 mm	1,156.1 mm	1,163.2 mm

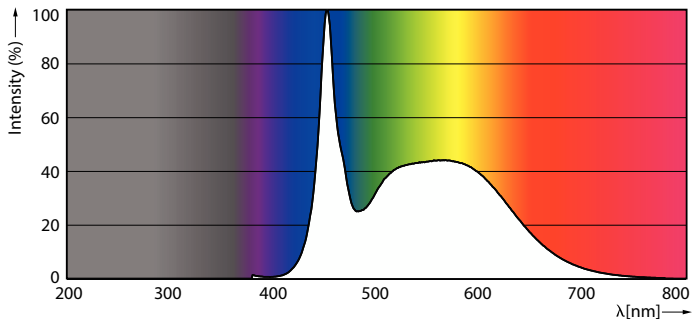
Photometric data



Light Distribution Diagram - MAS LEDtube 1200mm HE 16.5W 865 T5 EU

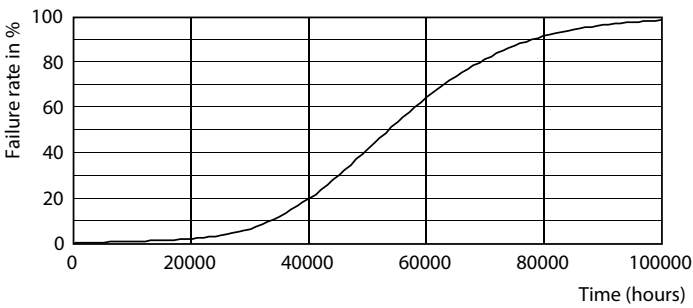
MASTER LEDtube Mains T5

Photometric data

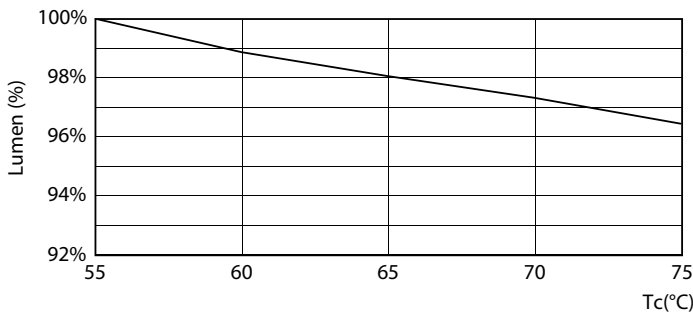


Spectral Power Distribution Colour - MAS LEDtube 1200mm HE 16.5W 865 T5 EU

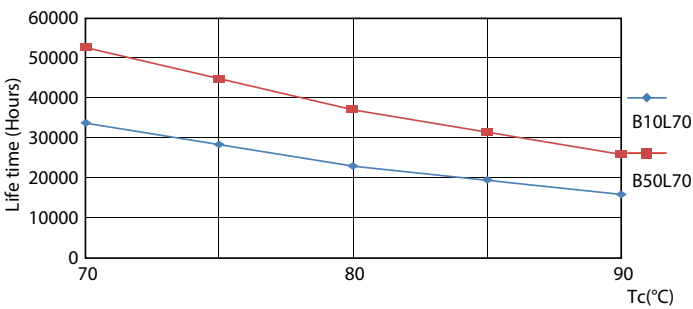
Lifetime



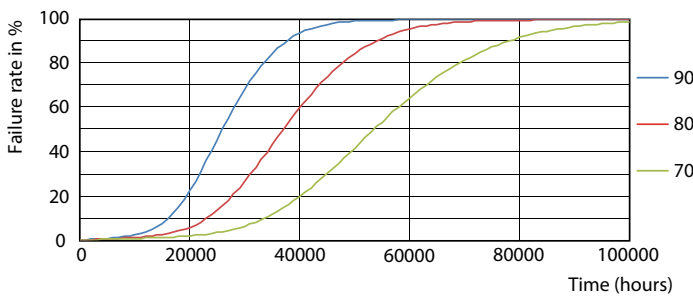
Life Expectancy Diagram - MAS LEDtube 1200mm HE 16.5W 865 T5 EU



Lumen Maintenance Diagram - MAS LEDtube 1200mm HE 16.5W 865 T5 EU



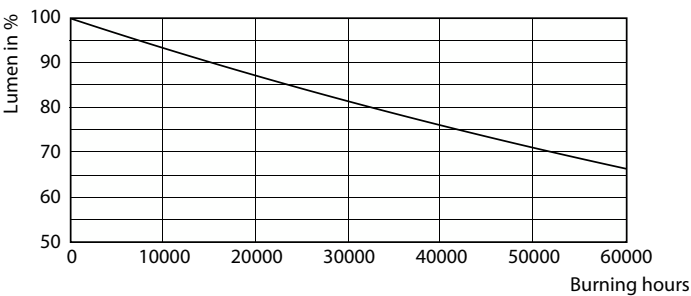
Life Expectancy Diagram - MAS LEDtube 1200mm HE 16.5W 865 T5 EU



Life Expectancy Diagram - MAS LEDtube 1200mm HE 16.5W 865 T5 EU

MASTER LEDtube Mains T5

Lifetime



Lumen Maintenance Diagram - MAS LEDtube 1200mm HE 16.5W 865 T5 EU

