



# MASTER VALUE LEDspot MV

## MASTER LED spot VLE D 650lm GU10 930 120D

Delivering a warm, halogen-like accent beam, the MASTER VALUE is a perfect fit for spot lighting. Thanks to its high CRI, it achieves more natural colours, creating cosy and comfortable ambience for residential and hospitality projects, and emphasising the beauty of merchandise in retail. These LED spots MV GU10 have the familiar look and feel of spot lamps, keeping the classic beauty of glass spots and adding the strong performance of LED technology. The dimming function enables you to create the atmosphere you desire, and it works with broad selection of dimmers. The MASTER VALUE also offers more energy savings than normal LED spots.

### Warnings and Safety

- Operating temperature range is between -20° C and 45° C ambient
- Only to apply in dry or damp locations and most of open fixtures with lamp-holders that offer sufficient space (10 mm free air space)
- Not intended for use with emergency light fixtures or exit lights

### Product data

General information		Beam angle (nom.)	
Cap base	GU10 [GU10]		120 degree(s)
EU RoHS compliant	Yes	Luminous Flux	650 lm
Nominal lifetime	25,000 h	Luminous intensity (nom.)	200 cd
Switching cycle	50,000	Colour designation	White (WH)
Lighting Technology	LED	Correlated Colour Temperature	3000 K
	Sphere	Luminous Efficacy (rated) (Nom)	104.00 lm/W
Brand	Philips	Colour consistency	<6
		Colour rendering index (CRI)	90
		LLMF at end of nominal lifetime (nom.)	70 %
Light technical			
Colour Code	930 [CCT of 3000K]		

# MASTER VALUE LEDspot MV

## Operating and electrical

Line Frequency	50 to 60 Hz
Input frequency	50 to 60 Hz
Power Consumption	6.2 W
Lamp current (nom.)	33 mA
Starting time (nom.)	0.5 s
Warm-up time to 60% light	0.5 s
Power Factor (Fraction)	0.88
Voltage (nom.)	220-240 V

## Temperature

T-Case maximum (nom.)	80 °C
-----------------------	-------

## Controls and dimming

Dimmable	Only with specific dimmers
----------	----------------------------

## Mechanical and housing

Bulb shape	PAR16 [PAR 2 inch/50 mm]
------------	--------------------------

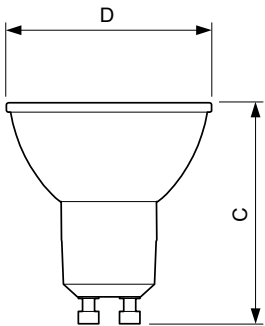
## Approval and application

Suitable for accent lighting	No
Energy consumption kWh/1,000 hours	7 kWh 391,917

## Product data

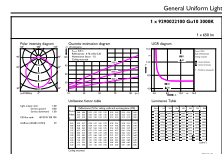
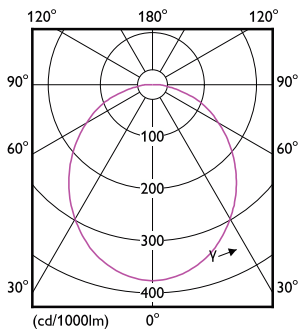
Full EOC	871869970609800
Order product name	MAS LED spot VLE D 650lm GU10 930 120D
Order code	70609800
SAP numerator – quantity per pack	1
Numerator – packs per outer box	10
Material number (12NC)	929002210002
Net weight	0.038 kg
Full product name	MASTER LED spot VLE D 650lm GU10 930 120D
EAN/UPC - Case	8718699706531

## Dimensional drawing



Product	D	C
MAS LED spot VLE D 650lm GU10 930 120D	50 mm	54 mm

## Photometric data

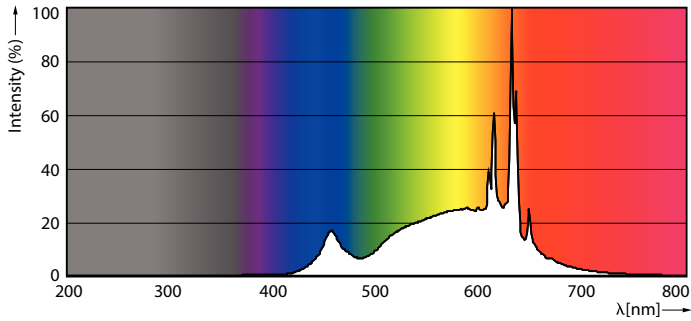


General Uniform Lighting  
1 x 650lm GU10 930 120D  
Page 11

Light Distribution Diagram - MAS LED spot VLE D 650lm GU10 930 120D

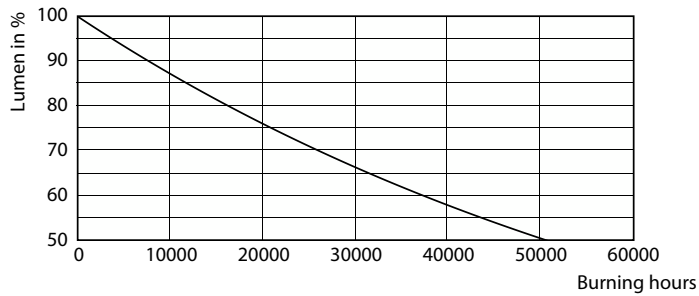
# MASTER VALUE LEDspot MV

## Photometric data

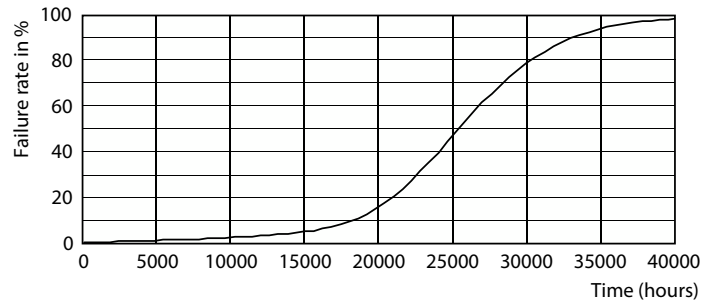


Spectral Power Distribution Colour - MAS LED spot VLE D 650lm GU10 930 120D

## Lifetime



Lumen Maintenance Diagram - MAS LED spot VLE D 650lm GU10 930 120D



Life Expectancy Diagram - MAS LED spot VLE D 650lm GU10 930 120D

