

# HID-HeavyDuty BSN semi-parallel for SON/CDO/MH/HPI

## BSN 70 L33-TS 230V 50Hz HD1-118

Encapsulated electromagnetic copper/iron ballasts for use with an external semi-parallel ignitor for CDM, CDO, MH, HPI (Plus) and SON lamps

### Product data

General information		Power losses (nom.)	
Remarks	UK importer address: Signify Commercial UK Limited, 3, Guildford Business Park, GU2 8XG	11.0 W	
Application code	L33-A2-TS		
Design	HD1-118		
Lamp type	SON/CDO		
Number of lamps	1 piece/unit		
Operating and electrical		Wiring	
Input Voltage	230 V	Wire strip length	7.0 mm
Input frequency	50 Hz	Ballast contact wire cross section	0.70-6.00 mm <sup>2</sup>
Power factor 100% load (nom.)	0.87	Connector type	Screw
Mains voltage performance (AC)	-8%~+6%		
Mains voltage safety (AC)	-10%~+10%		
Input current with PF correction	0.45 A	System characteristics	
Input current without PF Correction	1.00 A	Capacitor	12µF/250V
Power factor without PF compensation (nom.)	0.35	Rated ballast-lamp power	70 W
		Recommended ignitor	for SON/CDO lamps SND57 (913700184966) or series digital SUD10 (913700195891)
		Temperature	
		T storage (max.)	130 °C
		T storage (min.)	-30 °C
		T-winding (max.)	130 °C
		Delta-T normal conditions	55 °C

## HID-HeavyDuty BSN semi-parallel for SON/CDO/MH/HPI

### Approval and application

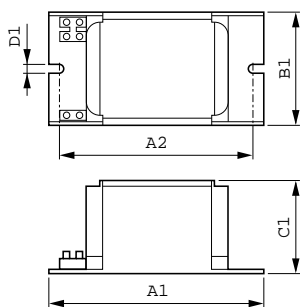
Active temperature protection	Yes
Approval marks	CE marking ENEC certificate

### Product data

Full product code	871150005968031
Order product name	BSN 70 L33-A2-TS 230V 50Hz HD1-118
EAN/UPC – product	8711500059680

Order code	05968031
Local order code	BSN70L33TS
SAP numerator – quantity per pack	1
Numerator – packs per outer box	6
SAP material	913700226526
Net Weight (Piece)	1.280 kg

### Dimensional drawing



Product	D1	C1	A1	A2	B1
BSN 70 L33-A2-TS 230V 50Hz HD1-118	6.2 mm	53.0 mm	118.0 mm	103.0 mm	65.0 mm

BSN 70 L33-A2-TS 230V 50Hz HD1-118

