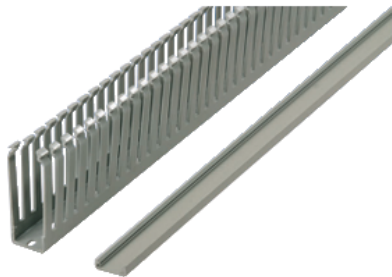


# Product data sheet

Specifications



Cable ducting with cover, RAL 7030, H50xW50mm, length 2m. Packaging unit: 24.

NSYCD2M5050

⚠ Discontinued

## Main

Accessory / separate part category	Cable management accessory
Product or component type	Cable duct
Range compatibility	Thalassa (Thalassa PLS) Thalassa (Thalassa PLA) Thalassa (Thalassa PLM) Spacial (Spacial SBM) Spacial (Spacial S3D) Spacial (Spacial S3CM) Spacial (Spacial CRN)
Anwendung	Multi-purpose
Device composition	1 cable duct 1 cover
Quantity per set	Set of 12

## Complementary

Material	PVC (polyvinyl chloride)
Colour	Grey (RAL 7030)
Length	2000 mm
Height	50 mm
Width	50 mm

## Environment

Environmental characteristic	Slotted trunking; Requirements and tests conforming to VDE 0660-506 Slotted trunkings for switchgear assemblies conforming to DIN 43659
Fire resistance	960 °C conforming to IEC 60695-2-1/1 960 °C conforming to UL94 (material V0)
Ambient air temperature for operation	-5...60 °C

## Offer Sustainability

EU RoHS Directive	Pro-active compliance (Product out of EU RoHS legal scope) <a href="#">EU RoHS Declaration</a>
Environmental Disclosure	<a href="#">Product Environmental Profile</a>

Contractual warranty

Warranty18 months

Recommended replacement(s)

NSYCD2M5050 is replaced by:

1x



Cable duct - 50 x 50 mm - without cover - grey  
AK2GD5050