



CorePro LEDtube EM/ Mains T8



CorePro LEDtube 1200mm 15.5W 865 T8

Philips CorePro LEDtubes are the quick and easy way to replace T8 fluorescent or other LED tubes with a fast pay back time. Not only does the Core range of LEDtubes require a low initial investment, but LED energy efficiency also delivers instant savings that you can bank on over a long and reliable lifetime. Plus, with the same lamp size and light distribution as fluorescent alternatives, you'll never know the difference. There are two ways to install these LED tubes: Rewire your existing fluorescent-based luminaires so the CorePro LEDtubes work directly on the Mains. Or simply change the fluorescent starter to an LED starter that can be used with your Electromagnetic ballasts.

Warnings and Safety

- NOTE: The overall energy efficiency and light distribution of any installation that uses these lamps will be determined by the design of the installation.
- Installation must be done according to the installation diagrams provided with the lamp or available online. Installation must be done by a certified professional.

Product data

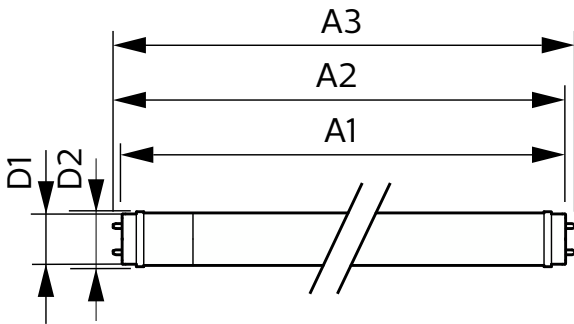
General information	
Cap-Base	G13 [Medium Bi-Pin Fluorescent]
CE mark	Yes
EU RoHS compliant	Yes
Nominal Lifetime (Nom)	30000 h
Switching Cycle	200000X
Technical Type	LEDTECH-LOV
Flux measurement reference	Sphere
Tier	CorePro

Light technical	
Color Code	865 [CCT of 6500K]
Beam Angle (Nom)	240 °
Luminous Flux (Nom)	1800 lm
Color Designation	Cool Daylight
Correlated Color Temperature (Nom)	6500 K
Luminous Efficacy (rated) (Nom)	116 lm/W
Color Consistency	<6
Color Rendering Index (Nom)	80

CorePro LEDtube EM/Mains T8

LLMF At End Of Nominal Lifetime (Nom) 70 %	
Operating and electrical	
Input Frequency	50 to 60 Hz
Power (Nom)	15.5 W
Lamp Current (Nom)	84 mA
Starting Time (Nom)	0.5 s
Warm Up Time to 60% Light (Nom)	0.5 s
Power Factor (Nom)	0.9
Voltage (Nom)	220-240 V
Temperature	
T-Ambient (Max)	45 °C
T-Ambient (Min)	-20 °C
T-Storage (Max)	65 °C
T-Storage (Min)	-40 °C
T-Case Maximum (Nom)	50 °C
Controls and dimming	
Dimmable	No
Mechanical and housing	
Bulb Finish	Frosted

Dimensional drawing



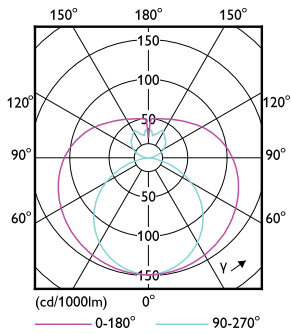
CorePro LEDtube 1200mm 15.5W 865 T8

Bulb Material	Glass
Product Length	1200 mm
Bulb Shape	Tube, double-ended
Approval and application	
Energy Efficiency Class	E
Energy Saving Product	Yes
Approval Marks	RoHS compliance CE marking KEMA Keur certificate
Energy Consumption kWh/1000 h	16 kWh
EPREL Registration Number	1183845
Product data	
Full product code	871951444809400
Order product name	CorePro LEDtube 1200mm 15.5W 865 T8
EAN/UPC - Product	8719514448094
Order code	929003519802
Numerator - Quantity Per Pack	1
Numerator - Packs per outer box	20
Material Nr. (12NC)	929003519802
Net Weight (Piece)	0.220 kg

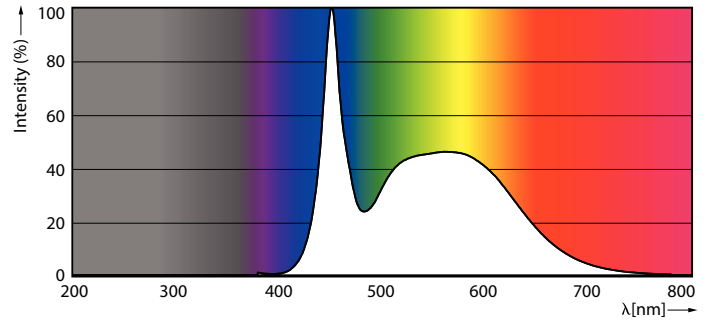
Product	D1	D2	A1	A2	A3
CorePro LEDtube 1200mm 15.5W 865 T8					

CorePro LEDtube EM/Mains T8

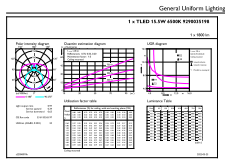
Photometric data



Light Distribution Diagram

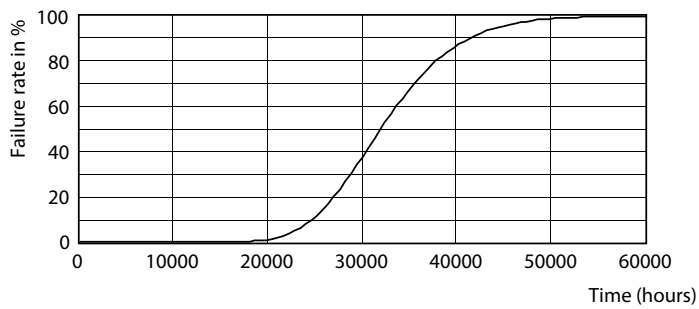


Spectral Power Distribution Colour

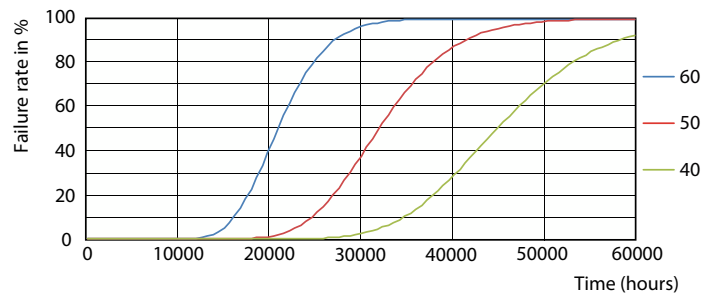


General uniform lighting

Lifetime



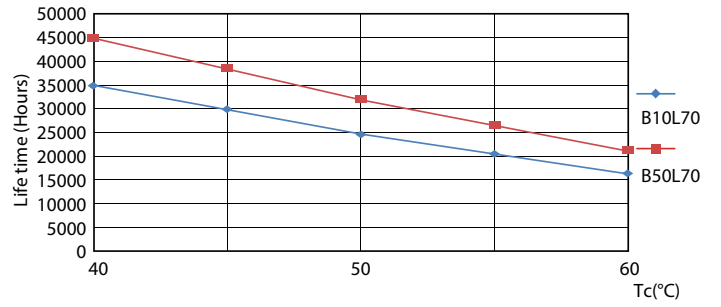
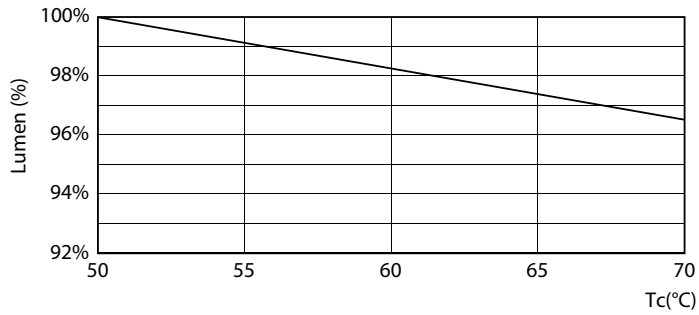
Life Expectancy Diagram



FailureRate

CorePro LEDtube EM/Mains T8

Lifetime



LumenVsTc

LifetimeVsTc



Lumen Maintenance Diagram

