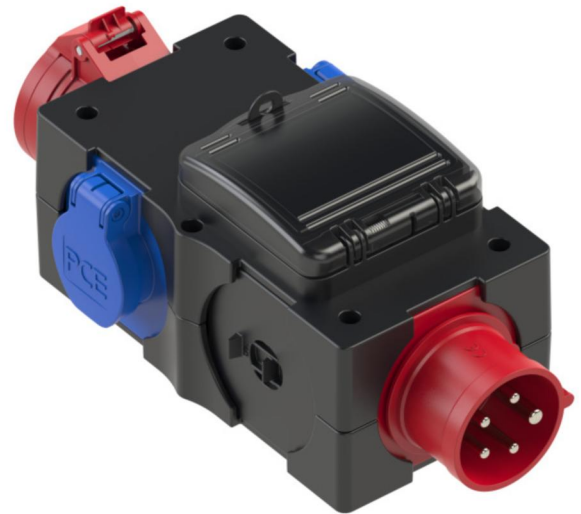


PCE data sheet

article#	9439004
article description	Mobilverteiler Kunststoff Baureihe ST.ANTON 6F 16/5 2xSSD GS16/5 Ea IP44
description long	mobile thermoplastic distribution box, model St.Anton 6f IP44 89x202x117 4TE 1xCEE-plug 16A 5p 400V 1xCEE-socket 16A 5p 400V protected with pre-fuse of supply line 2xSK-sockets 16A 250V IP54 protected with pre-fuse of supply line 1xRCD I 40A/4/0.03A (TYP A 25AT) over all outlets RCD is Eaton ÖVE / VDE branded distribution box is ready wired for using
GTIN (EAN)	9003399388507
country of origin	AT
customs number	85371098
net weight	1.300 kg
packaging quantity	2

ETIM 7.0	EC000379
CEE socket outlet 16 A	1x16A5p400V
Number of socket outlets with protective contact	2
Protection	None
Earth leakage switch	Earth leakage switch with IFN 30 mA (standard)
Material housing	Plastic
Contact material	CuZn
Power supply/connection possibility	Built-up plug
Type of mains connection	CEE 16 A
Handling	Portable
Degree of protection (IP)	IP44
Colour	Black
Height	89 mm
Width	117 mm
Depth	202 mm



www.manufacturer-safety.info