



F&F Filipowski sp. j
ul. Konstytucyjna 79/81
95-200 Pabianice, POLAND
tel/fax 48 42 2270974
e-mail: fif@fif.com.pl

PCU-520 24V

TIMING RELAYS

SETTING OF TWO INDEPENDENT TIME



www.fif.com.pl

F&F products are covered by an 24 months warranty from date of purchase

PURPOSE

Timing relays are devised to time the control of industrial and domestic automatic control engineering systems (e.g. entilation, heating, lighting, signalling, etc.).
Setting two independent times : work time t1 and break time t2.

FUNCTIONING

Working mode: LAGGED DEACTIVATION(A)

Until the relay is activated, the contact remains in the 1-5, 2-8 position. After the power voltage is supplied (green LED U is shining), contact is shifted to position 1-6, 2-7 for time t1 (red LED is shining). After the preset time t1 has been counted down, joint returns to position 1-5, 2-8 for time t2. After time t2 joint return to position 1-6, 2-7. The working sequence of the relay may be repeated after turning the power supply off and on.

LAGGED ACTIVATION (B)

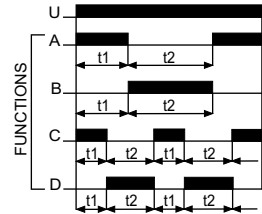
After the power voltage is supplied (green LED U is shining), the contact remains in position 1-5, 2-8 for time t1. After the preset time t1 has been counted down, the joint is shifted to position 1-6, 2-7 for time t2 (red LED is shining). After time t2 joint returns to position 1,5, 2-8. The working sequence of the relay may be repeated after turning the power supply off and on.

LAGGED ACTIVATION - CYCLIC (D)

The Lagged Activation mode is triggered in equal work cycles according to the preset time values.

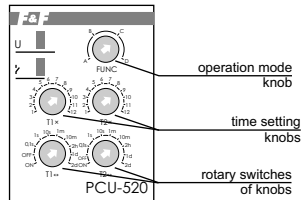
LAGGED DEACTIVATION - CYCLIC (C)

The Lagged Deactivation mode is triggered in equal work cycles according to the preset time values.



Setting the time range knob regulator in the:

- ON** - position with power supply activated connection of joint in position 1-6, 2-7.
- OFF** - position with power supply activated connection of joint in position 1-5, 2-8.



WORK TIME SETTINGS

By time range switch T↔ set to one of chosen range and by setting time knob T× set value from 1 to 12. Product of this vaules is equal work time (e.g. 1m×7=7 min).

WORK MODE SETTINGS

By knob FUNC set one of functions (e.g. function A - Lagged Deactivation).

ATTENTION!

- With the power supply on, the system does not respond to time range setting modifications.
- The newly set time range is active after the power supply has been turned off and on.
- With the power supply on, it is possible to regulate the preset time freely within the selected time range.

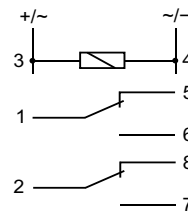
ASSEMBLY

1. Take OFF the power.
2. Put on the relay on the rail in the switchgearbox.
3. Cables of power connect with wiring diagram with marks: for permanent voltage: joint 3- "+" joint 4- "-". For alternating current polarity of connection is free.
4. System of switching ON a receiver connect in line to joints 1-6 and 2-7.

TECHNICAL DATA

supply	24V AC/DC
current load	2×(<10A)
joint	2P
work time	0,1sec+24h
break time	0,1s+24h
switching ON delay	<50msec
power supply indicator	green LED
operation mode indicator	red LED
power consumption	1,2W
working temperature	-25+50°C
connection	screw terminals 2,5mm ²
dimensions	2 modules (35mm)
fixing	on rail TH-35

WIRING DIAGRAM



A090605