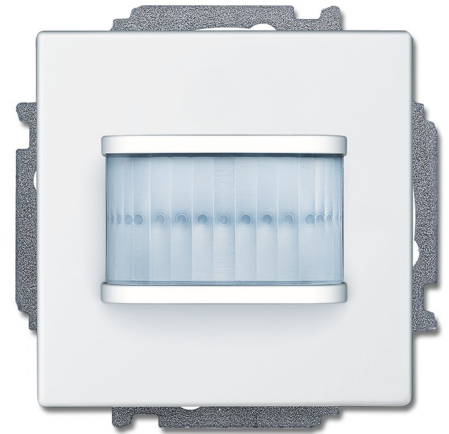


Sensor/actuator combinations

Movement detector/switch actuator, 1gang  
for ABB-free@home®



With select lens for detection with animal access.

For automatic switching of ABB-free@home® actuators dependent on movement and brightness.

Switch-off delay of the actuator can be programmed via the web interface of the System Access Point.

For switching 127 V~/230 V~ consumers.

With integrated switch actuator.

Switching function is available also without prior programming (pre-configured).

Configuration can be changed later via the web interface (groups, scenes, etc.).

The bus can be connected via enclosed terminal block.

When installing in the flush-mounted box, a spatial division between the bus cable and 127 V/230 V installation cable is to be adhered to! If this minimum distance is not possible, use electronic boxes or insulating tubes.

Bus voltage: 24 V,

Outputs: 1 Normally open contact, potential free, Suitable for: ohmic, Rated current: 10 A, Output voltage: 230 V~, Rated power: 2300 W, Suitable for: capacitive, Rated current: 10 AX, Rated power: 2300 VA, Suitable for: inductive, Rated current: 10 AX, Rated power: 2300 VA

Protection class (Device): IP 20, Temperature range (Device): -5 °C to 45 °C, Detection range: frontal: 6 m, lateral: 3 m, Brightness limit value: 1 Lux - 500 Lux, Detection angle: 180 °,

Dimensions: (L x W x D): 71 mm x 71 mm x 53 mm, Mounting depth: 32 mm, Position for installation: vertical, Mounting height: 1.1 m - 1.3 m,

Programming only with bus voltage applied via the web interface of the System Access Point., Additional information about commissioning and operation is contained in the system manual and the online operating manual of the current Online-Catalogue.

Order Code : 2CKA006220A0217

Article No. : MSA-F-1.1.1-84

EAN: 4011395179895