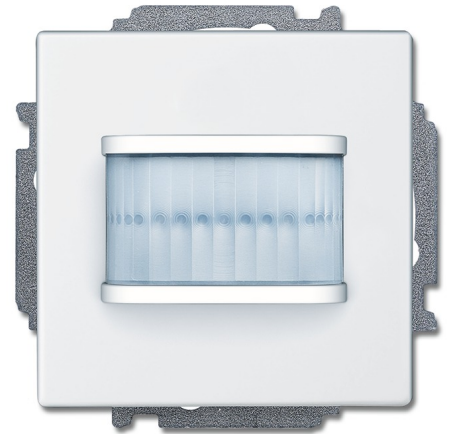


Sensor/actuator combinations, wireless
Movement detector/switch actuator, 1gang, wireless
for ABB-free@home®



With select lens for detection with animal access.

Communication with the free@home system is carried out wireless.

For automatic switching of ABB-free@home® actuators dependent on movement and brightness.

Switch-off delay of the actuator can be programmed via the web interface of the System Access Point.

For switching 230 V~ consumers.

With integrated switch actuator.

Switching function is available also without prior programming (pre-configured).

Configuration can be changed later via the web interface (groups, scenes, etc.).

3 wire connection (neutral conductor required).

With 230 V extension unit input (On/Off).

With fixing claws.

Rated voltage: 230 V~, Rated frequency: 50 Hz / 60 Hz,

Outputs: 1 Normally open contact, potential-bound, Suitable for: ohmic, Rated current: 10 A, Output voltage: 230 V~, Rated power: 2300 W, Suitable for: capacitive, Rated current: 10 AX, Rated power: 2300 VA, Suitable for: inductive, Rated current: 10 A, Rated power: 2300 VA

Protection class (Device): IP 20, Temperature range (Device): -5 °C to 45 °C, Detection range: frontal: 6 m, lateral: 3 m, Brightness limit value: 1 Lux - 500 Lux, Detection angle: 180 °,

Dimensions: (L x W x D): 71 mm x 71 mm x 53 mm, Mounting depth: 32 mm, Position for installation: vertical, Mounting height: 1.1 m - 1.3 m,

Programming via the web interface of the System Access Point., Additional information about commissioning and operation is contained in the system manual and the online operating manual of the current Online-Catalogue.

Order Code : 2CKA006200A0086

Article No. : MSA-F-1.1.1-84-WL

EAN: 4011395215760