



ul. Konstytucyjna 79/81  
95-200 Pabianice  
tel/fax 48 42 2270971 POLAND  
e-mail: fif@fif.com.pl

## CZF2-BR

### PHASE CONTROL RELAYS

with checking state of contactor joints



www.fif.com.pl

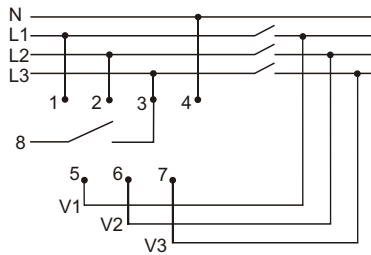
F&F products are covered by a 24 months warranty from date of purchase

#### PURPOSE

Three phase monitors serve to protect the three-phase electric motors supplied from three-phase mains, against phase collapse in at least one phase or against phase-to-phase voltage asymmetry, threatening to damage the motor.



#### WIRING DIAGRAM



#### FUNCTIONING

Supplied a receiver is signaled by shine of green LED. Phase collapse in at least one phase or voltage unbalance between phases - more than set value of threshold by user - above fixed actuation threshold causes switching-OFF the motor. The motor switching-OFF occurs with delay 4sec, which prevents any accidental motor disconnecting at temporary voltage drop. The re-connection will occur automatically at voltage increase of 5V above activation voltage (i.e. of value of voltage hysteresis) Break of any contactor is signaled by shine of red LED. The re-connection is possible after take OFF the power, fixe a break and again take ON the power. At occurrence of these disturbances, it is not possible to set a motor in motion.

#### ASSEMBLY

1. Check work of motor.
2. Take OFF the power.
3. Put on the relay on the rail in the switchgear box.
4. Connect power with marks.
5. Contractor of relay (joint 8) connect in line to coil of contractor which switch On the motor.
6. By potentiometer set value of voltage asymmetry treshold.

#### TECHNICAL DATA

supply	3×400/230V+N
current load	<10A
joint	1N/O
sygnalling of supply	2×LED
activation voltage asymmetry	40+50V~
hysteresis	5V~
switching OFF delay	4sec
power consumption	1,6W
working temperature	-25+40°C
connection	screw terminals 2,5mm <sup>2</sup>
dimensions	2 modules (35mm)
fixing	on rail TH-35

