



CoreLine Waterproof

WT120C LED34S/840 PSU L1500

WT120C - LED Module, system flux 3400 lm - 840 neutral white - Power supply unit

Whether for a new building or renovation of an existing space, customers want lighting solutions that provide quality of light and substantial energy and maintenance savings. The new CoreLine Waterproof range of LED products can be used to replace traditional waterproof luminaires with fluorescent lamps. The process of selecting, installing and maintaining is so easy – it's a simple switch.

Product data

General Information			
Number of light sources	1 pc	Glow-wire test	Temperature 850 °C, duration 30 s
Lamp family code	LED34S [LED Module, system flux 3400 lm]	Flammability mark	For mounting on normally flammable surfaces
Beam angle of light source	120 °	CE mark	CE mark
Light source color	840 neutral white	ENEC mark	ENEC mark
Light source replaceable	No	UL mark	-
Number of gear units	1 unit	Warranty period	5 years
Driver/power unit/transformer	Power supply unit	Constant light output	No
Driver included	Yes	Number of products on MCB of 16 A type B 24	
Optic type	-	RoHS mark	RoHS mark
Optical cover/lens type	Polycarbonate bowl/cover	Product family code	WT120C
Luminaire light beam spread	110°	Operating and Electrical	
Emergency lighting	-	Input Voltage	220 to 240 V
Connection	Push-in connector and pull relief	Input Frequency	50 to 60 Hz
Cable	-	Inrush current	17.8 A
Protection class IEC	Safety class I	Inrush time	0.282 ms
Color	Gray		

CoreLine Waterproof

Power Factor (Min)	0.9
--------------------	-----

Controls and Dimming

Dimmable	No
----------	----

Mechanical and Housing

Housing Material	Polycarbonate
Reflector material	Steel
Optic material	Polycarbonate
Optical cover/lens material	Polycarbonate
Fixation material	Stainless steel
Optical cover/lens finish	Frosted
Overall length	1530 mm
Overall width	87 mm
Overall height	96 mm

Approval and Application

Ingress protection code	IP65 [Dust penetration-protected, jet-proof]
Mech. impact protection code	IK08 [5 J vandal-protected]

Initial Performance (IEC Compliant)

Initial luminous flux	3400 lm
Luminous flux tolerance	+/-10%
Initial LED luminaire efficacy	117 lm/W
Init. Corr. Color Temperature	4000 K
Init. Color Rendering Index	80
Initial chromaticity	(0.38, 0.38) SDCM <3.5

Initial input power	29 W
Power consumption tolerance	+/-10%

Over Time Performance (IEC Compliant)

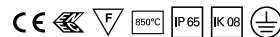
Driver failure rate at 5000 h	1 %
Median useful life L70B50	50000 h
Median useful life L80B50	30000 h
Median useful life L90B50	15000 h

Application Conditions

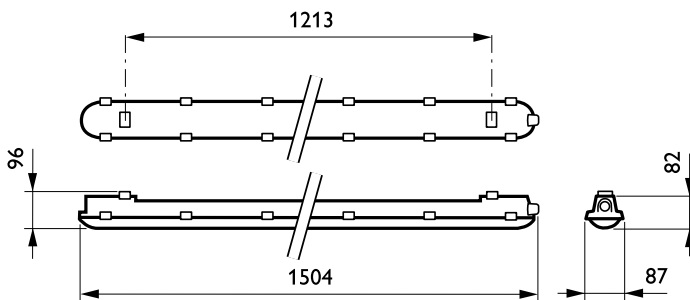
Ambient temperature range	0 to +25 °C
Average ambient temperature	25 °C
Suitable for random switching	Yes (relates to presence/ movement detection and daylight harvesting)

Product Data

Full product code	871829184047300
Order product name	WT120C LED34S/840 PSU L1500
EAN/UPC - Product	8718291840473
Order code	910500453337
Numerator - Quantity Per Pack	1
Numerator - Packs per outer box	1
Material Nr. (12NC)	910500453337
Net Weight (Piece)	1.820 kg



Dimensional drawing



CoreLine Waterproof WT120C

