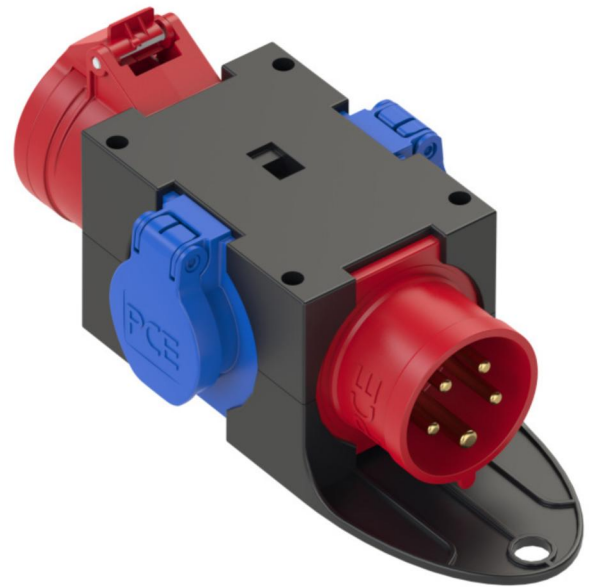


## PCE data sheet

article#	<b>9430402</b>
article description	<b>Mobilverteiler Kunststoff Baureihe ST.ANTON 16/5 2xSSD GS16/5 m.B. IP44</b>
description long	Distribution box, mobile, thermoplastic, series St.Anton IP44 1xCEE-plug 16A 5p 400V 1xCEE-Steckdose 16A 5p 400V not fused 2xsocket (DIN49440) 16A 250V IP44 not fused Distribution box is ready wired for connection
GTIN (EAN)	9003399304026
country of origin	AT
customs number	85366990
net weight	0.500 kg
packaging quantity	2

ETIM 7.0	EC000379
CEE socket outlet 16 A	1x16A5p400V
Number of socket outlets with protective contact	2
Protection	None
Earth leakage switch	None
Material housing	Plastic
Contact material	CuZn
Power supply/connection possibility	Built-up plug
Type of mains connection	CEE 16 A
Handling	Portable
Degree of protection (IP)	IP44
Colour	Black
Height	80 mm
Width	115 mm
Depth	78 mm



[www.manufacturer-safety.info](http://www.manufacturer-safety.info)